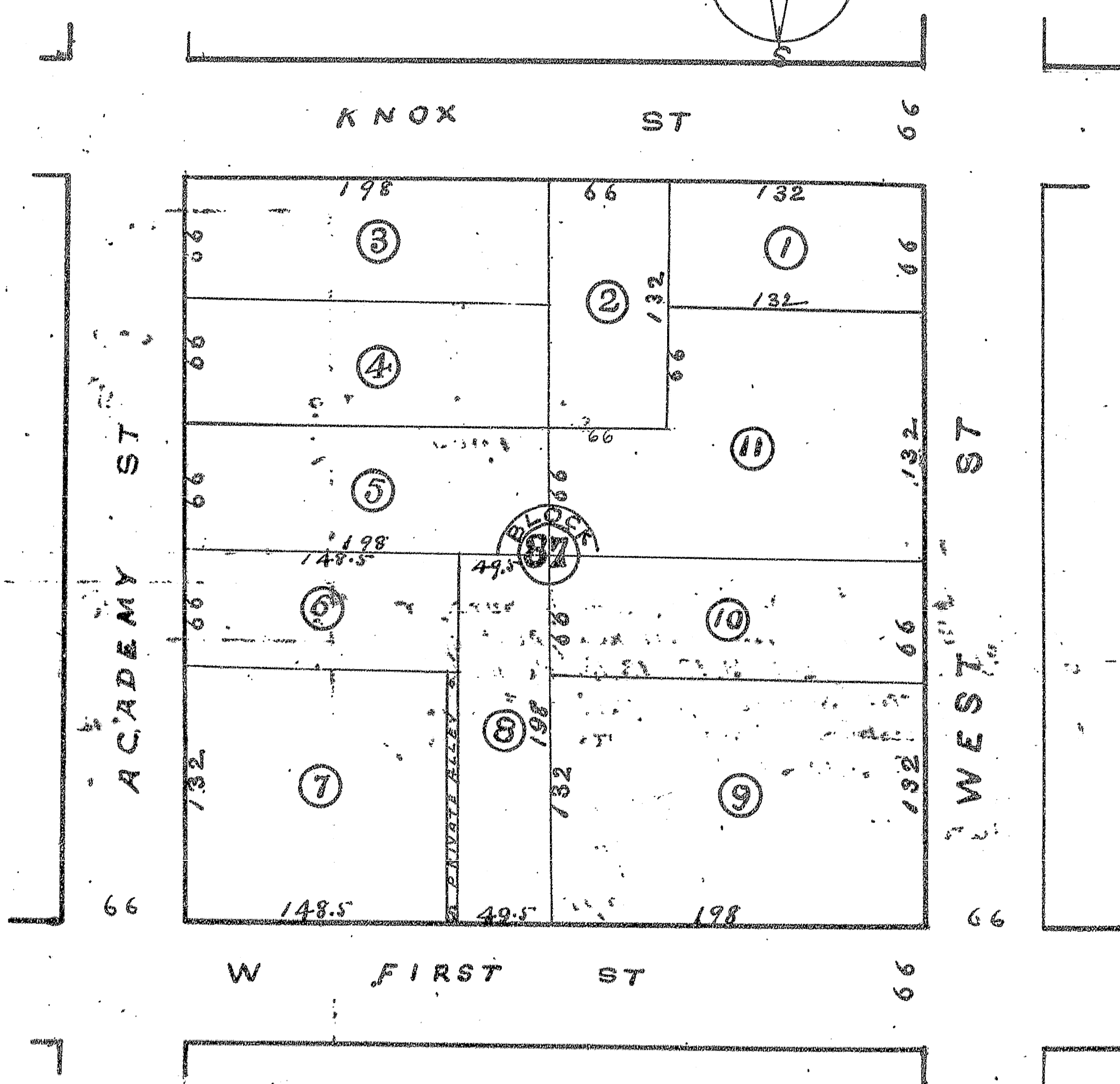
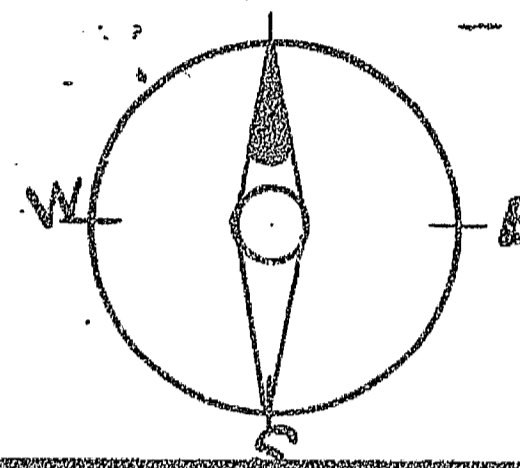


SUBDIVISION 1900
 BLOCK 87 SECOND SOUTHERN ADDITION
 TO
 CITY OF GALESBURG KNOX CO. ILL.

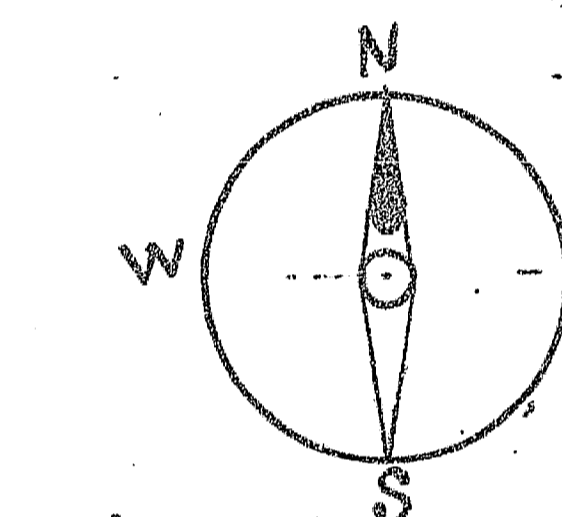
SCALE 1" = 100'



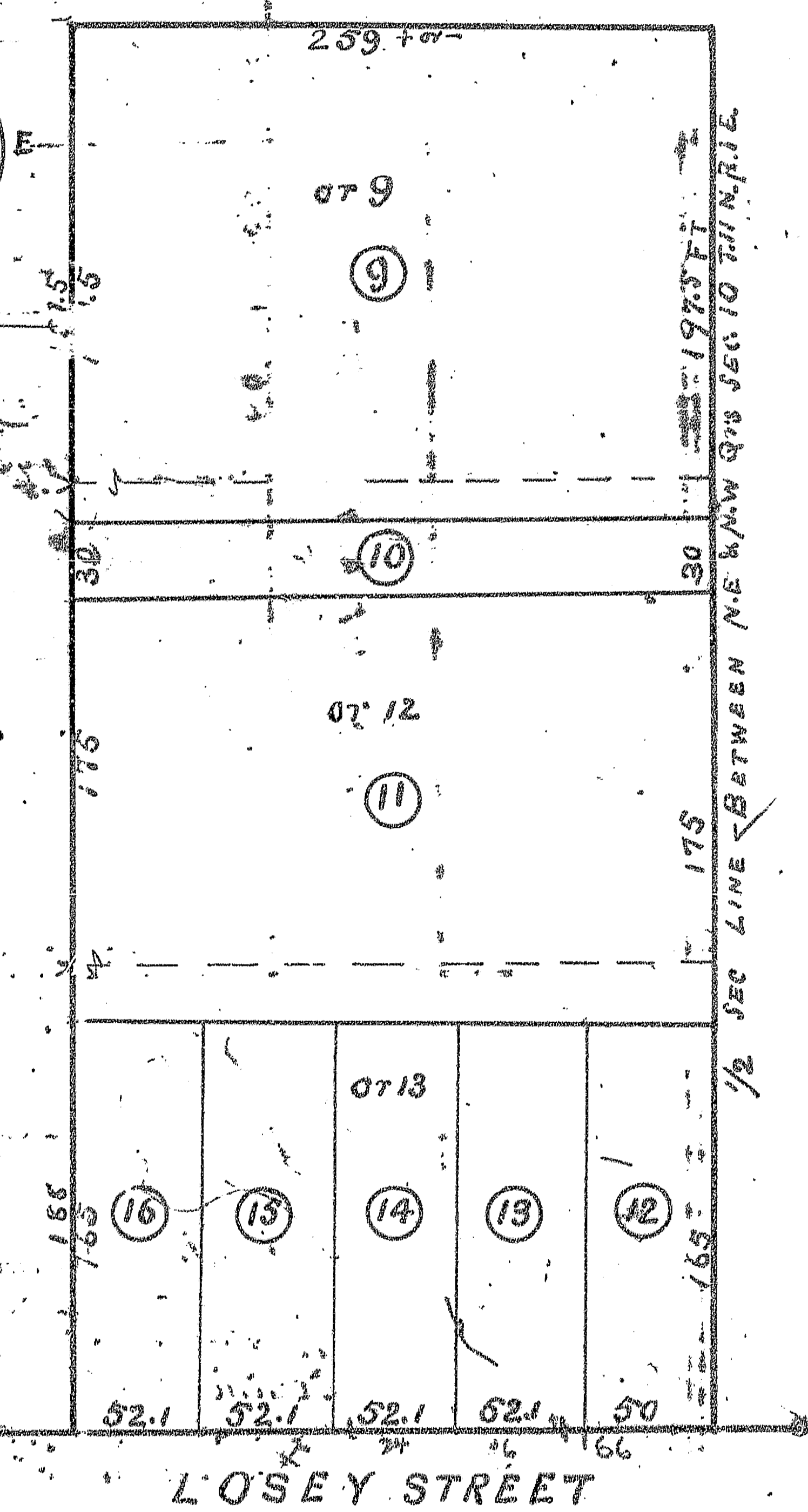
State of Illinois ss
 Knox County) S. C. Richey County Surveyor
 hereby Certify that the above plat of Block 87 Second
 Southern Addition to the City of Galesburg, truly
 represents the present ownership of said Block as shown by
 recorded deeds made for the use of Knox County Feb 22. A.D. 1900
 S. Richey
 Surveyor

M. O. Williamson
 County Clerk

PLAT OF
SUBDIVISION 1900
 OF LOTS 9, 12, & 13, BLOCK 1
 W^m M. FERRIS, SECOND ADDITION
 TO THE CITY OF GALESBURG
 KNOX CO. ILL.



SCALE 1" = 1000'



State of Ill.
 Knox Co.) J. C. Richey County Surveyor
 hereby Certify that the annexed plat of
 a subdivision of Lots 9, 12 & 13, Block One
 of W^m M. Ferris, Second Addition to the
 City of Galesburg - truly represents ownership
 of said lots 9, 12 & 13
 made for the use of Knox County
 March 26 1900
 J. C. Richey
 Co Surveyor

OK
 M. O. Williamson
 County Clerk